

Supporting Our Immigrant Neighbors and Communities

Wednesday, April 23rd from 3:30 to 5:00 p.m. in Fontbonne 210

We Invite St. Kate's Community to Join Us for a Presentation On:

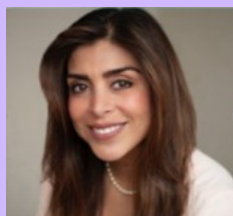
Current challenges of our immigrant neighbors, students, and communities.
Immigration status definitions and implications.
Strategies for supporting our immigrant communities.
Compassionate, culturally responsive care for Latin/X Minnesotans.

Our Presenters



Juventino Meza,
J.D., B.A.

Juventino Meza is an internationally recognized champion for human rights, a non-profit executive, and a leader in civic engagement. His work is focused on Latinos, higher education, LGBTQ+ communities, immigration policy, and governance and democracy. Juventino played a critical role in building a broad coalition to get President Obama to create Deferred Action for Childhood Arrivals (DACA) in 2012 and pass the Minnesota Dream/Prosperity Act in 2013. Juventino serves on the Policy Committee of the MN Immigrant Law Center.



**Ana Mariella
Rivera, LICSW**

Ana is a Latina Mental Health Professional with over 18 years of clinical experience. She owns a thriving consulting and psychotherapy practice and specializes in using a Healing-Centered approach emphasizing moving beyond trauma to foster strengths, agency, joy, imagination, and collective well-being. She is an Adjunct Instructor at St. Catherine University, the host of the Historias y Huellas Podcast, and contributor and collaborator on the Telemundo television network.



**ST. CATHERINE
UNIVERSITY**

Equity and Belonging

In Collaboration with the Office of
Equity & Belonging and Professor
Marcy Mears, DSW, MSW, LICSW,
Department of Social Work

RSVP



Questions?

Email equitybelonging@stkate.edu